



**CRAM-A-LOT®**  
J.V. Manufacturing, Inc.

# Baler College

Baler Basics & Applications





**CRAM-A-LOT®**  
J.V. Manufacturing, Inc.

**Welcome!**

# **Baler College**

## **Baler Basics & Applications**

- The Benefits of Balers
- Types of Balers
- Baler Performance Features
- Conducting Site Surveys
- Sources of Technical Information
- General Baler Safety



**CRAM-A-LOT®**  
J.V. Manufacturing, Inc.

# Benefits of Balers

SAVES



MONEY!



## The Benefits of Balers

- Cost Reduction – They save money by reducing disposal cost
- Revenue Gain – They gain revenue by selling the bales to the paper mills
- Cleanliness – Reduce clutter and minimize trip hazards
- Save Space – Saves stockroom space



**CRAM-A-LOT®**  
J.V. Manufacturing, Inc.

# Types of Balers

- Vertical Balers
- Horizontal Balers
  - Manual Tie
  - Auto Tie

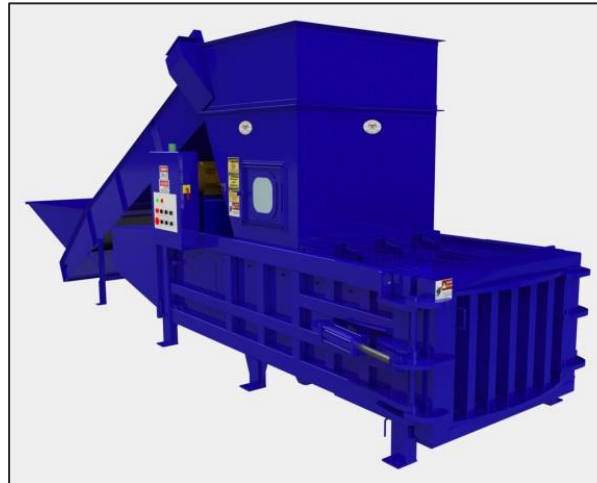


**CRAM-A-LOT®**  
J.V. Manufacturing, Inc.

# Types of Balers

## Various Baler Types Exist to Meet Specific Needs

- Corrugated, News Print, Plastic Bottles, Aluminum Cans, Shrink wrap, Cloth-





**CRAM-A-LOT®**  
J.V. Manufacturing, Inc.

# PET Balers

- Suitable for small volumes of plastic, aluminum
- Small Footprint, Small Bales
- Available in 18, 24, 30, 36" sizes
- Bale weight 70lbs to 175lbs





**CRAM-A-LOT®**  
J.V. Manufacturing, Inc.

# Vertical Balers

- Suitable for corrugated, plastic, aluminum, news print, shrink wrap, cloth
- Generally for medium volumes of material
- Available in 42, 46, 60, 72, 84" sizes
- Stockroom models available for low ceiling height
- Narrow models available for space constraints
- Heavy duty / high pressure models available
- Bale weight for corrugated ranges from 200 lbs to 1200 lbs



**VB-42**



**VB-60**





**CRAM-A-LOT®**  
J.V. Manufacturing, Inc.



**VB-42-SR**



**VB-60-SR**





**CRAM-A-LOT®**  
J.V. Manufacturing, Inc.

# Conducting a Site Survey

It is important to conduct a thorough site survey to ensure all of the customer's needs can be met through the proper selection and installation of the baler. The following questions should be asked during the site survey to ensure all necessary information is collected:

- **What type of material?** OCC, cans, bottles, shrink film, cloth, or other?
- **What size of material?** How bulky is the largest material to be processed?
- **What volume of refuse?** How many tons are generated per week?
- **What is the peak demand?** Periods of peak demand may determine baler size and speed.
- **What method of material handling?** Will material be carried or brought in carts?
- **How much available space?** Seems like there is never enough space!
- **Is there adequate power?** A properly sized disconnect is required.



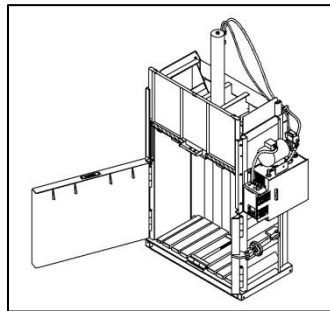
**CRAM-A-LOT®**  
J.V. Manufacturing, Inc.

# Conducting a Site Survey

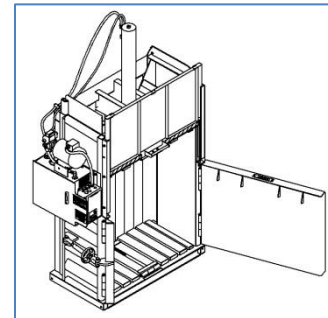
## Vertical Baler Survey

- Company: \_\_\_\_\_ Site Name: \_\_\_\_\_
- Contact Name : \_\_\_\_\_ Phone number: \_\_\_\_\_

1. What size is the largest material you plan to process? \_\_\_\_\_
2. What type of material? Corrugated \_\_\_\_, Plastic bottles \_\_\_\_, Cans \_\_\_\_, Plastic film \_\_\_\_,
3. How many tons of material do you plan to process each week? \_\_\_\_\_
4. Where would you like to place the baler? \_\_\_\_\_
5. What door swing would you like? Left hand \_\_\_\_\_, Right hand \_\_\_\_\_,
6. What is the ceiling height at your planned location? \_\_\_\_\_
7. What type and size of access do you have to the location? \_\_\_\_\_
8. Can you provide a forklift for the offloading and installation? \_\_\_\_\_
9. Do you have an electrical disconnect available at this location? \_\_\_\_\_
10. What voltage is it or will it be? \_\_\_\_\_



LEFT HAND



RIGHT HAND



**CRAM-A-LOT®**  
J.V. Manufacturing, Inc.

# Vertical Baler Survey

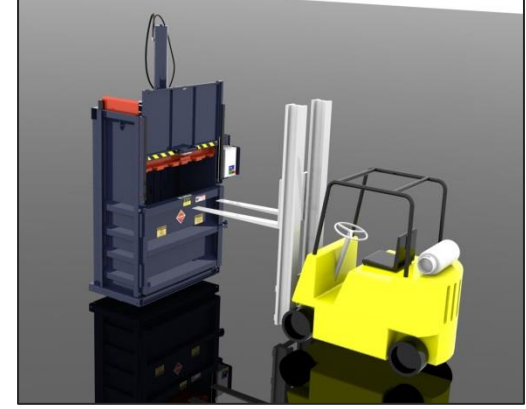
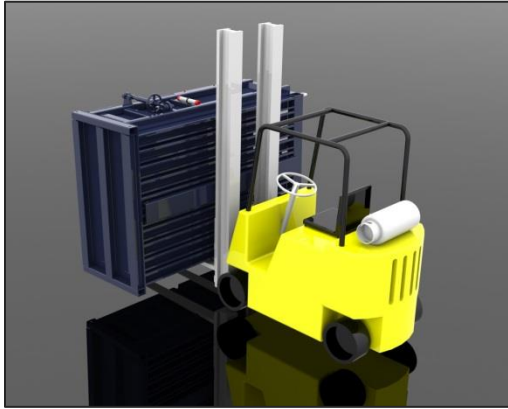
- Need clearance around baler, 28" clearance both sides and back
- Need an exterior door adequate to bring baler into the building
- Need space to eject bale and move it out of the building
- Need space to store bales until truckload quantity is reached
- Need electrical disconnect within 10' of baler





**CRAM-A-LOT®**  
J.V. Manufacturing, Inc.

# Vertical Baler Install



- Baler must be placed into position
- Often shipped on side so may need to be “stood up”
- Baler must be anchored into concrete pad
- Cylinder must be lifted into position and bolted to cylinder mount
- Wire loom must be hooked up to electrical disconnect, provided by customer

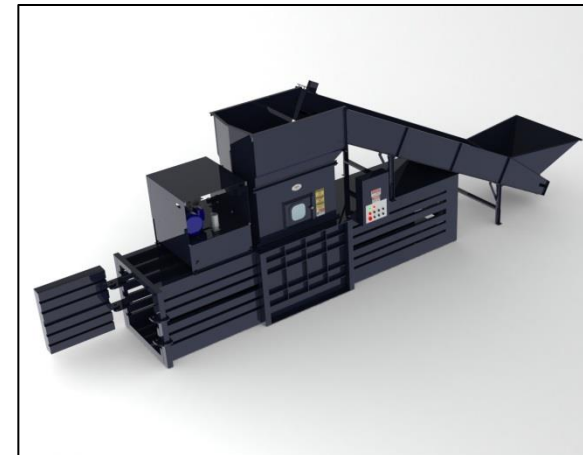
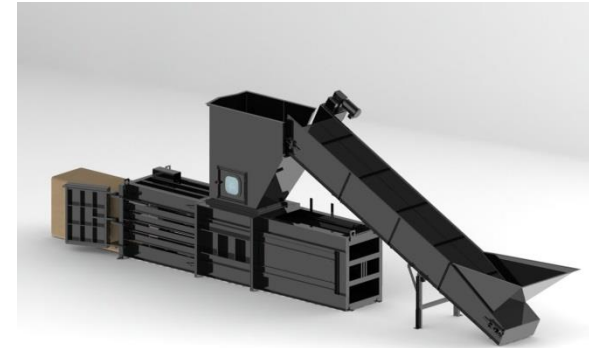


**CRAM-A-LOT®**  
J.V. Manufacturing, Inc.

# Horizontal Balers

## HH-60 & HX-72 SERIES

- These units are suited for Distribution Centers and Industrial applications.
- Suited for large volumes of single material types being processed .
- Suited for cardboard, shrink wrap, newsprint, aluminum.
- Can be conveyor fed over the rear or side.
- Bales must be tied manually
- Available in HH-60, HX-60, HX-72, HX-72-W.







**CRAM-A-LOT®**  
J.V. Manufacturing, Inc.

# Horizontal Balers

## HH-60 & HX-72 Specialty Applications





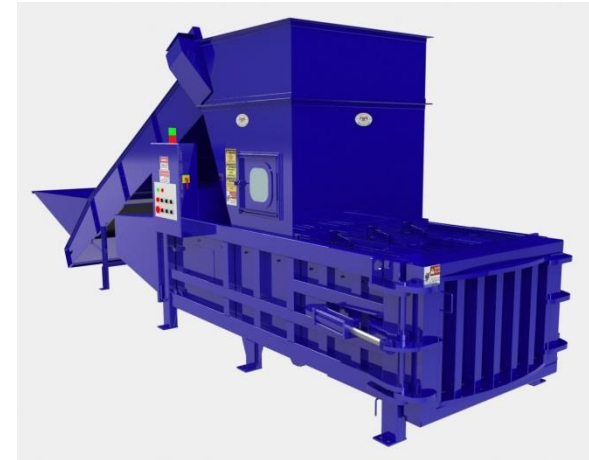


**CRAM-A-LOT®**  
J.V. Manufacturing, Inc.

# Horizontal Balers

## HE-60 "BIG MOUTH"

- These units are ideal for recycling centers.
- Suited for processing a variety of material types.
- Cardboard, shrink wrap, PET, aluminum cans,
- Can be conveyor fed over the rear only.
- 60" x 30" x 48' mill-ready bale.
- Bales must be tied off manually.

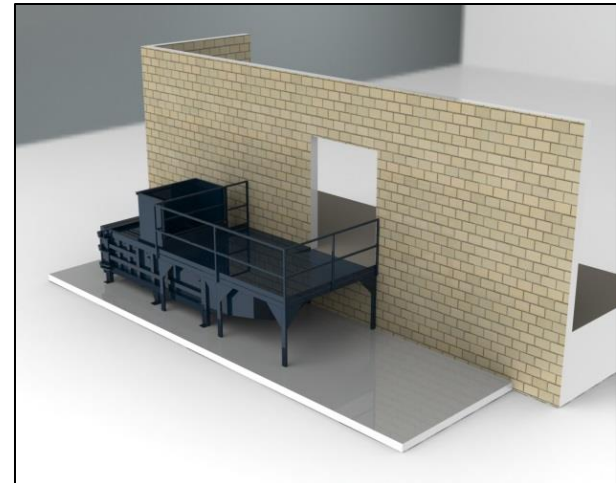
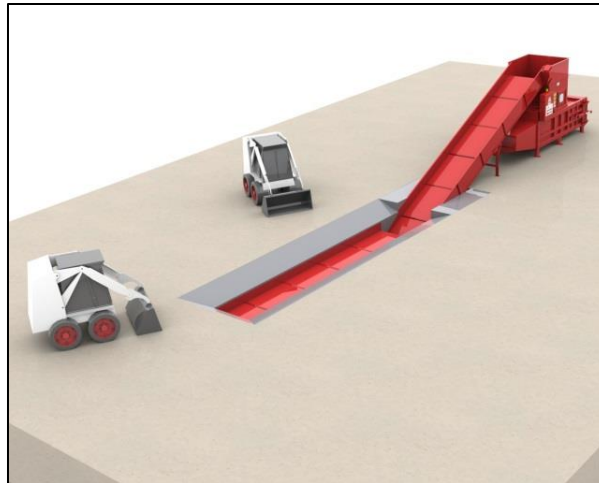
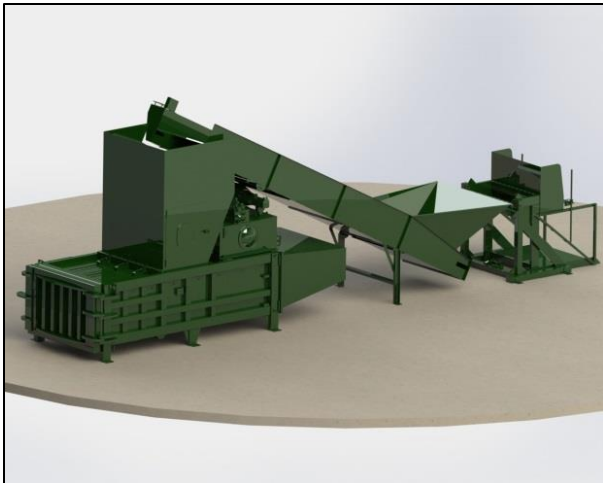
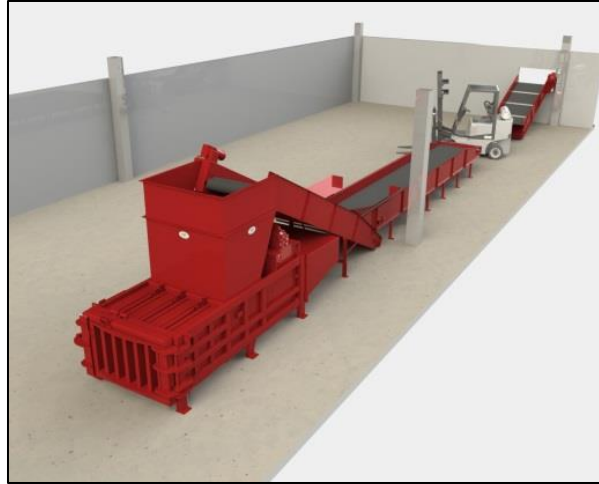




**CRAM-A-LOT®**  
J.V. Manufacturing, Inc.

# Horizontal Balers

## HE-60 Specialty Applications



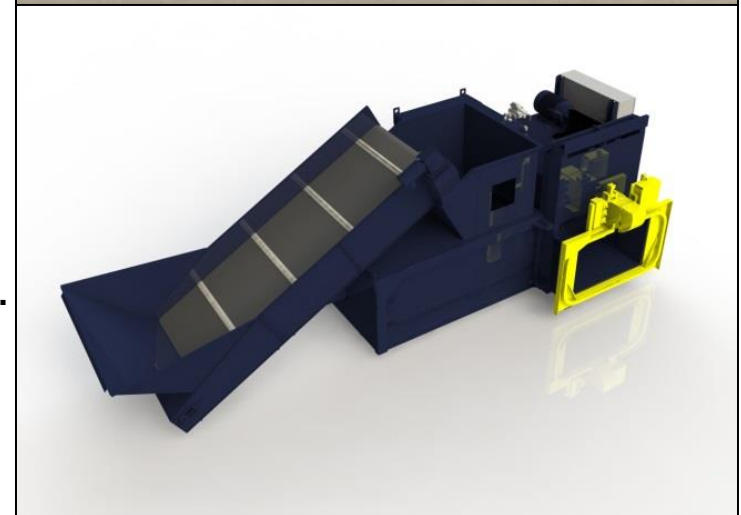


**CRAM-A-LOT®**  
J.V. Manufacturing, Inc.

# Horizontal Balers

## H2R-60 Two Ram Auto Tie

- These units are ideal for Material Recovery Facilities, Recycling Centers, and Distribution Centers.
- The auto-tie feature reduces labor costs and increases throughput.
- Full penetration ensures high-density mill ready bales. (60" x 30" x 48' )
- Processes a variety of materials including OCC, newsprint, office paper, aluminum cans, PET bottles, shrink wrap, cloth copper, brass.
- The H2R-60 has the smallest footprint in its class.
- Throughput of 3-4 bales per hour.



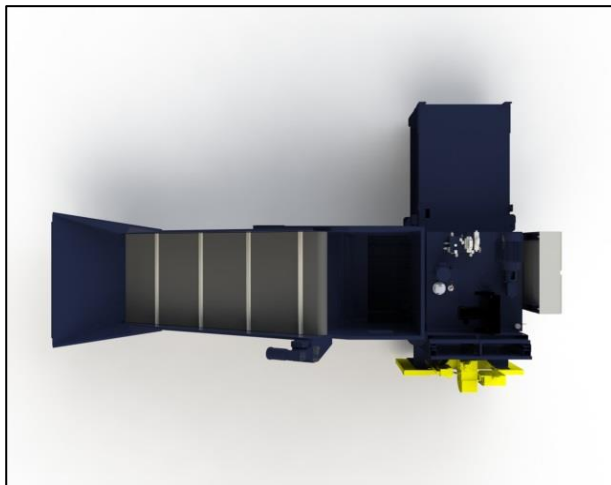
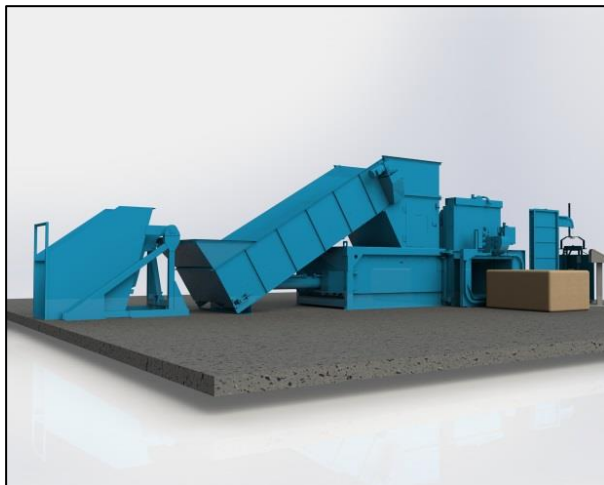
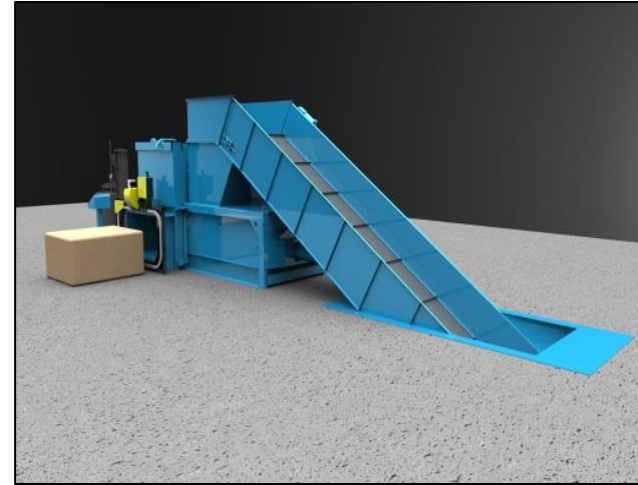
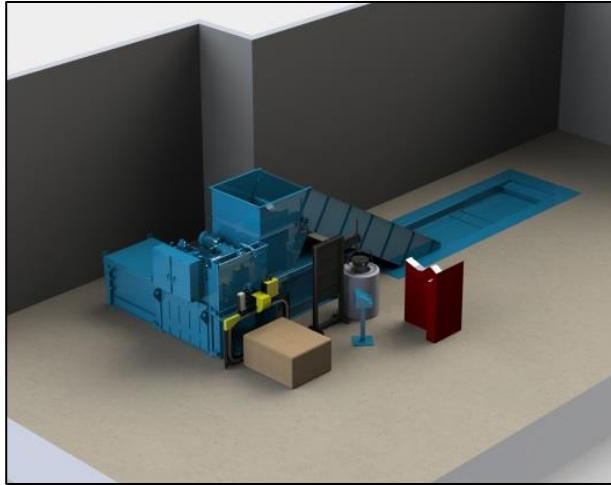




**CRAM-A-LOT®**  
J.V. Manufacturing, Inc.

# Horizontal Balers

## H2R-60 Specialty Applications





**CRAM-A-LOT®**  
J.V. Manufacturing, Inc.

# Sources of Technical Information

- **Regional Sales Manager**
- **Owner's Manual**
- **Product Literature**
- **Product Specifications**
- **Electrical Service Requirements**
- **ANSI Standards – Z245.2**
- **Cram-A-Lot Customer Support**
- **Cram-A-Lot Website**



**Waste Expo 2013**



[www.cram-a-lot.com](http://www.cram-a-lot.com)



**CRAM-A-LOT®**  
J.V. Manufacturing, Inc.

# General Baler Safety

**Only trained and authorized personnel should operate the baler!**

**It is a violation of public law for individuals under age 18 to operate the baler.**

**It is a violation of public law for individuals under age 16 to load the baler.**

- **NEVER** place hands or arms in the baler while it is operating.
- **NEVER** stand behind the baler while it is operating.
- **NEVER** climb in or on the baler, nor perform any maintenance / repairs unless the power is disconnected and locked / tagged out.
- **NEVER** allow anyone except qualified electrical or hydraulic repair persons to work on the equipment.
- **NEVER** disable any safety switch.
- **NEVER** overload the baler chamber.
- **NEVER** place concrete, heavy steel plate or castings, explosive materials, liquids, nor hazardous waste in the baler.





**CRAM-A-LOT®**  
J.V. Manufacturing, Inc.

# General Baler Safety

## Safety Terminology

The accident prevention decals on your compactor meet or exceed standards set by ANSI and OSHA. It is important that you are familiar with the terminology used on the decals and the varying degrees of hazards that are associated with this terminology.

**DANGER**—Indicates an imminently hazardous situation which, if not avoided, will result in death or serious injury. This signal word is to be limited to the most extreme situations. The signal word Danger should not be used for property damage hazards unless personal injury risk appropriate to the level is also involved.

**WARNING**—Indicates a potentially hazardous situation which, if not avoided, could result in death or serious injury. This signal word should not be used for property damage hazards unless personal injury risk appropriate to this level is also involved.

**CAUTION**—Indicates a potentially hazardous situation which, if not avoided, may result in minor or moderate injury. It may also be used to alert against unsafe practices that may also cause property damage.

**NOTICE**—Indicates a statement of company policy directly or indirectly related to the safety of personnel or protection of property. This signal word should not be associated directly with a hazard or hazardous situation.





**CRAM-A-LOT®**  
J.V. Manufacturing, Inc.

# Electrical Options

- **Keypad Access Control** – Allows authorized users to enter a PIN code and operate the machine
- **Bio-Start** – Allows authorized users to start the compactor using their fingerprint – no PIN number means no sharing of codes





**CRAM-A-LOT®**  
J.V. Manufacturing, Inc.

**Q & A**